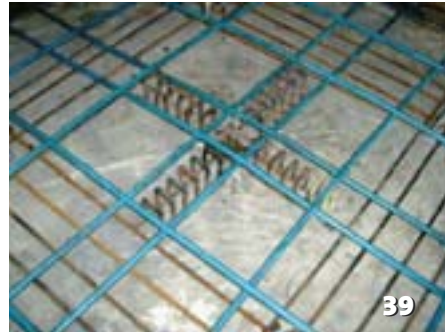


PTI JOURNAL

Vol. 5 • No. 1



7



39



57



61

TECHNICAL PAPERS

- 7** POST-TENSIONED CONCRETE WALLS FOR SEISMIC RESISTANCE
L. PANIAN, M. STEYER AND S. TIPPING
- 17** BACK-UP BARS FOR RESIDENTIAL SLAB-ON-GROUND FOUNDATIONS
GREGORY P. CHACOS
- 23** PROGRESSIVE WEAKENING TO FAILURE OF AN UNBONDED POST-TENSIONED FLAT PLATE
CRAIG R. RATAY
- 33** REPAIR OF PARTIALLY GREASED-FILLED ENCAPSULATED MONOSTRAND POST-TENSIONING TENDONS
RAUL A. BEDON
- 39** PUNCHING SHEAR CAPACITY OF POST-TENSIONED SLAB WITH HAIRPIN SHAPED REINFORCEMENTS
ZAHER ABOU SALEH AND WIMAL SUARIS

OPEN FORUM

- 49.** ACI AND PTI REQUIREMENTS FOR ENCAPSULATION SYSTEMS
LARRY B. KRAUSER

CASE STUDIES

- 55** A THREE DAY CYCLE IN SEISMIC COUNTRY
SAN FRANCISCO'S ONE RINCON HILL
CHRIS PLUE
- 57** ESCALA
POST-TENSIONING IS OBVIOUS CHOICE FOR SEATTLE'S LARGEST CONDOMINIUM TOWER
SHEILA BACON
- 61** A PERFECT MATCH
POST TENSIONING AND SHRINKAGE COMPENSATING CONCRETE FORM A DURABLE UNION AT JOHN WAYNE AIRPORT
MICHAEL CHUSID

INDUSTRY NEWS

- 67** PTI AWARDS 2007 LEGENDS OF POST-TENSIONING
- 72** PTI APPROVES STANDARDS & SPECIFICATION CHANGES

ON THE COVER: One Rincon Hill, San Francisco, CA (Courtesy of WEBCOR Concrete)